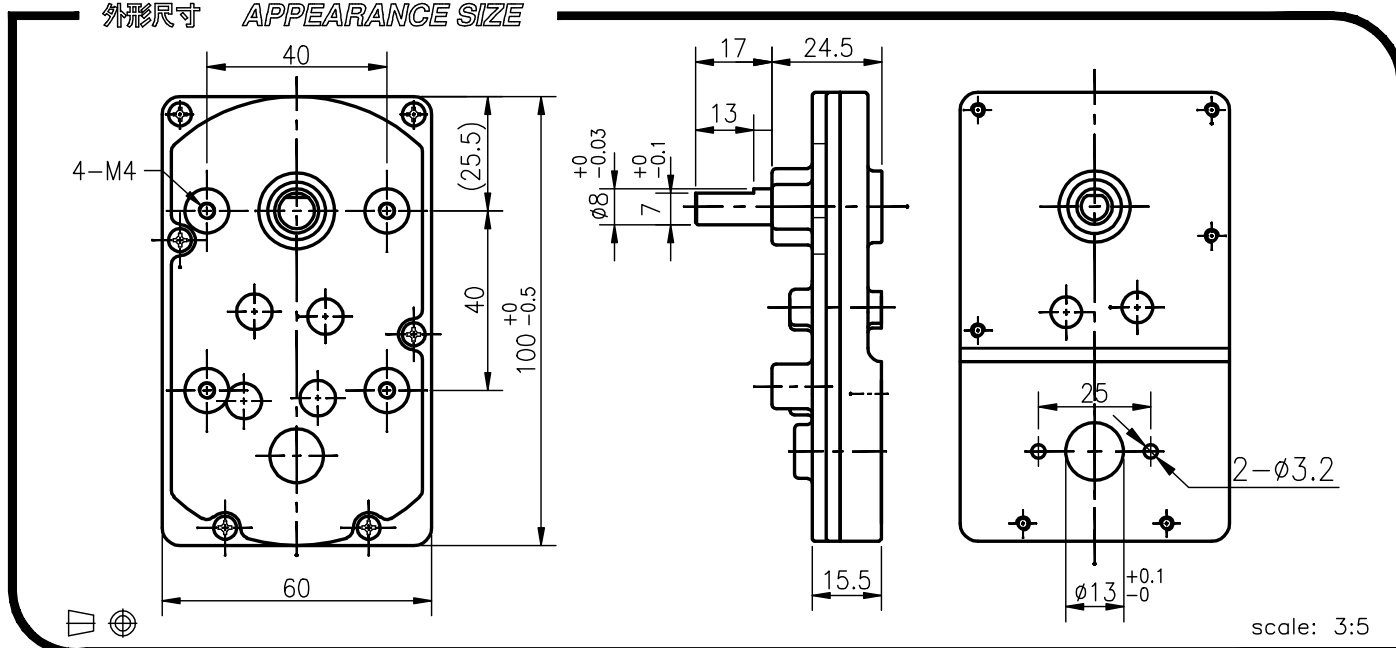


RB-99W



外殼材質 Housing material	金屬 metal	背隙 (無負荷時) Backlash, at no-load	≤ 3°
輸出軸承型式 Bearing at output	含油軸承 Sleeve bearings		
徑向負荷 Radial load (10mm from flange)	≤ 3 kgf		
軸向負荷 Shaft axial load	≤ 5 kgf		
主軸最大承受壓入力 Shaft press fit force, max.	≤ 30 kgf		
徑向間隙 Radial play of shaft	≤ 0.10 mm		
軸向間隙 Thrust play of shaft	≤ 0.35 mm		

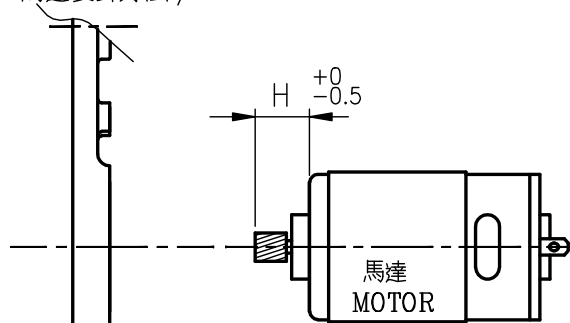
外形尺寸 APPEARANCE SIZE



馬達齒輪型式 / PINION SPECIFICATIONS

模數 Module	0.5	
齒數 No. of teeth	11	13
壓力角 Pressure angle	20°	
螺旋角 Helix angle	18°(左, left)	
孔徑 Hole diameter	ø3.16	
減速比 Reduction ratio	1/30, 1/100, 1/147 1/305, 1/459	1/24, 1/54 1/81, 1/246

馬達裝卸方法 / MOTOR INSTALLATION



★ 使用相對溼度: 20%~85%RH ★ 使用溫度範圍: -10°C~+60°C
Operating relative humidity Operating temperature range

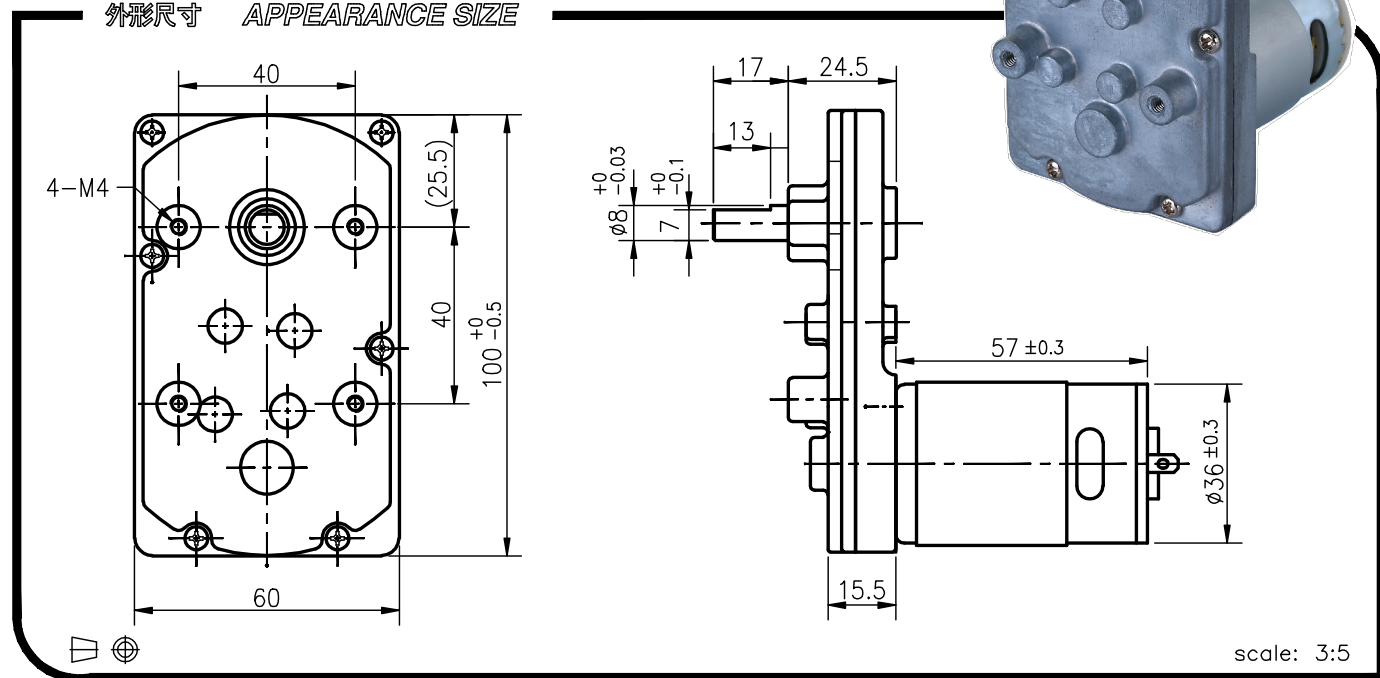
標準減速比型式 / GEARBOXES SPECIFICATIONS

減速比 Reduction ratio	精確減速比 Exact reduction ratio	定格容許扭力 Rated tolerance torque	瞬間容許扭力 Max momentary tolerance torque	效率 Efficiency	H	重量 Weight (g)
1/24, 1/30	24 16/91, 30	3 kgf-cm Max.	9 kgf-cm	73%	10.6	325
1/54	53 11/13	6 kgf-cm Max.	18 kgf-cm	73%	10.6	325
1/81, 1/100	80 124/143, 100 211/605	8 kgf-cm Max.	24 kgf-cm	73%	10.6	325
1/147	147 273/605	8 kgf-cm Max.	24 kgf-cm	73%	10.6	325
1/246, 1/305	246 2/13, 305 5/11	10 kgf-cm Max.	30 kgf-cm	66%	7.0	340
1/459	458 446/605	10 kgf-cm Max.	30 kgf-cm	66%	7.0	340

RB-99WGM

01&02 TYPE

外形尺寸 APPEARANCE SIZE



GEARED MOTOR TORQUE/SPEED

	減速比 Reduction ratio	1/24	1/30	1/54	1/81	1/100	1/147	1/246	1/305	1/459										
	12V	3	3	6	8	8	8	10	10	10										
	24V	3	3	6	8	8	8	10	10	10										
	24V	210	170	93	63	52	35	22	17	12										

馬達單體型式 / MOTOR DATA

定格電壓 Rated volt (V)	定格扭力 Rated torque (g-cm)	定格回轉數 Rated speed (rpm)	定格電流 Rated current (mA)	無負荷回轉數 No load speed (rpm)	無負荷電流 No load current (mA)	定格出力 Rated output (W)	重量 Weight (g)
12	250	4930	≤ 1600	6000	≤ 250	12.80	220
24	240	5150	≤ 750	6000	≤ 130	12.70	220

馬達單體特性圖 / MOTOR CHARACTERISTICS

