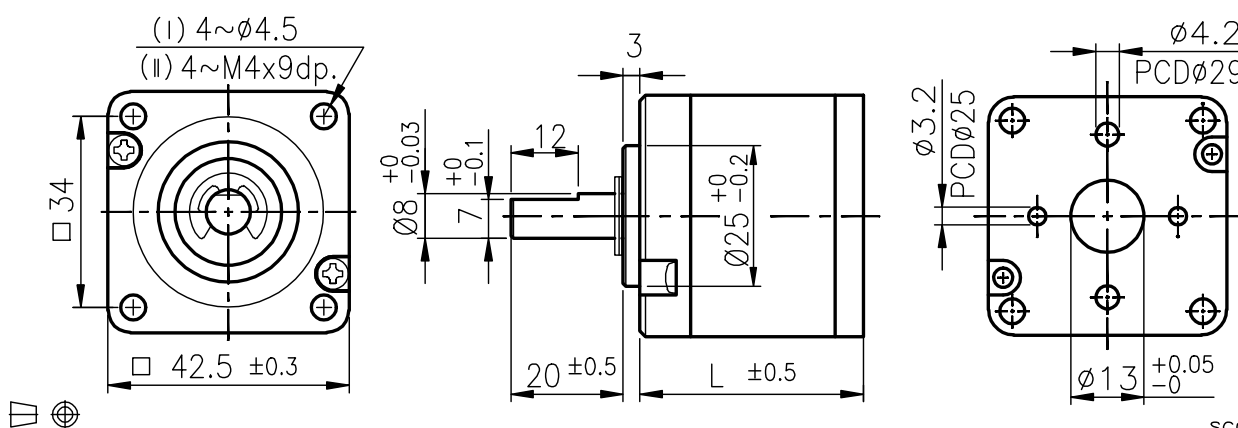


IG-43



外殼材質 Housing material	粉末金屬 Powder metal	背隙 (無負荷時) Backlash, at no-load	$\leq 3^\circ$
輸出軸承型式 Bearing at output	滾珠軸承 Ball bearings		
徑向負荷 Radial load (10mm from flange)	$\leq 8 \text{ kgf}$		
軸向負荷 Shaft axial load	$\leq 3 \text{ kgf}$		
主軸最大承受壓入力 Shaft press fit force, max.	$\leq 15 \text{ kgf}$		
徑向間隙 Radial play of shaft	$\leq 0.05 \text{ mm}$		
軸向間隙 Thrust play of shaft	$\leq 0.3 \text{ mm}$		

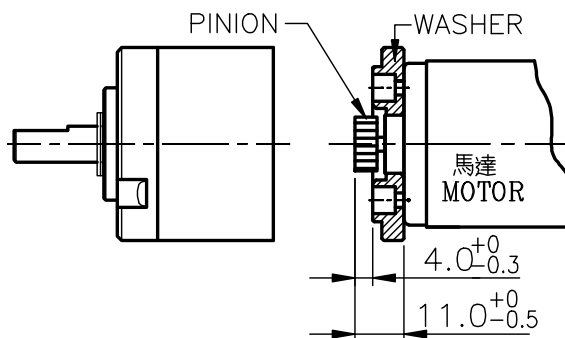
外形尺寸 APPEARANCE SIZE



馬達齒輪型式 / PINION SPECIFICATIONS

模數 Module	0.6				
齒數 No. of teeth	12	15	18	24	20
壓力角 Pressure angle	20°				
孔徑 Hole diameter	ø3.16 , ø3.98				
減速比 Reduction ratio	1/24, 1/84 1/104, 1/144 1/504, 1/864	1/720	1/17 1/61 1/212	1/14 1/49	1/4

馬達裝卸方法 / MOTOR INSTALLATION



★ 使用相對溼度: 20%~85%RH ★ 使用溫度範圍: -10°C~+60°C
Operating relative humidity Operating temperature range

標準減速比型式 / GEARBOXES SPECIFICATIONS

減速比 Reduction ratio	精確減速比 Exact reduction ratio	定格容許扭力 Rated tolerance torque	瞬間容許扭力 Max momentary tolerance torque	效率 Efficiency	L	重量 (滾珠軸承) Weight (g) Ball bearings
1/4	4	4.0 kgf-cm Max.	12.0 kgf-cm	80%	26.15	190
1/14, 1/17, 1/24	14, 17 1/3, 24	8.0 kgf-cm Max.	24.0 kgf-cm	70%	32.95	250
1/49, 1/61, 1/84	49, 60 2/3, 84	15.0 kgf-cm Max.	45.0 kgf-cm	60%	39.75	305
1/104, 1/144	104, 144	20.0 kgf-cm Max.	60.0 kgf-cm	60%	39.75	305
1/212, 1/294	212 1/3, 294	25.0 kgf-cm Max.	75.0 kgf-cm	50%	46.45	360
1/504, 1/624	504, 624	30.0 kgf-cm Max.	90.0 kgf-cm	50%	46.45	360
1/720, 1/864	720, 864	30.0 kgf-cm Max.	90.0 kgf-cm	50%	46.45	360

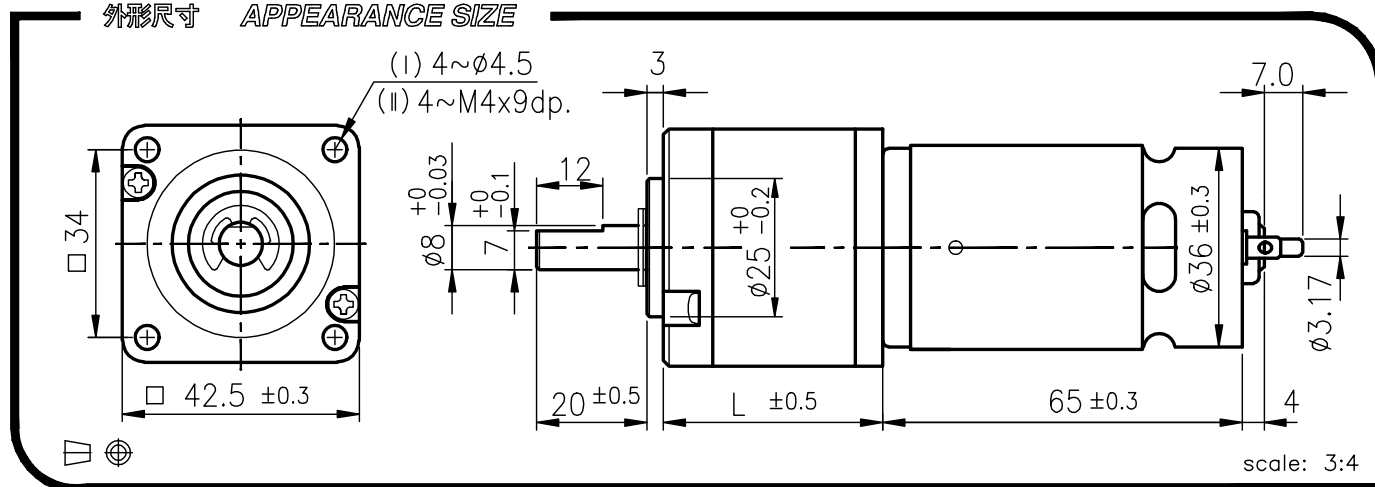
IG-43GM

01&02 TYPE

REDUCTION RATIO	L	REDUCTION RATIO	L
1/4	26.15	1/49~1/144	39.75
1/14~1/24	32.95	1/212~1/864	46.45



外形尺寸 APPEARANCE SIZE



GEARED MOTOR TORQUE/SPEED

	減速比 Reduction ratio	1/4	1/14	1/17	1/24	1/49	1/61	1/84	1/104	1/144	1/212	1/294	1/504	1/624	1/720	1/864				
	12V	1.0	3.0	3.6	5.2	9.2	11	15	19	20	25	25	30	30	30	30				
	24V	0.9	2.6	3.1	4.5	8.0	10	14	17	20	25	25	30	30	30	30				
	Rated torque	1250	363	293	212	103	83.5	60.5	49	38	25.4	18.9	11.2	8.8	8.0	6.5				
	Rated speed	1290	375	302	218	107	86.5	62.5	50.5	39	26.2	18.8	11.2	8.8	8.0	6.5				
	Rated speed																			

馬達單體型式 /MOTOR DATA

定格電壓 Rated volt (V)	定格扭力 Rated torque (g-cm)	定格回轉數 Rated speed (rpm)	定格電流 Rated current (mA)	無負荷回轉數 No load speed (rpm)	無負荷電流 No load current (mA)	定格出力 Rated output (W)	重量 Weight (g)
12	320	5090	≤ 2100	6000	≤ 350	17.09	266
24	280	5250	≤ 900	6000	≤ 170	15.56	266

馬達單體特性圖 /MOTOR CHARACTERISTICS

